

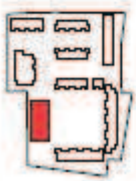
Scale: 1:50
 Date: 15/03/2024
 Author: [Name]
 Check: [Name]



For Planning
 Formwork Architects

The People Centre
 47 Overlook Road
 London, SE 10 0DD
 T: 020 7261 0291
 F: 020 7261 0294

formworkarchitects.com



Client: Genesis City Co
 100% Planning Application
 Site: 100% Planning Application
 Date: 15/03/2024

Scale: 1:50
 Date: 15/03/2024
 Author: [Name]
 Check: [Name]



FRONT ELEVATION

MATERIALS KEY

- 01 Gable wall
- 02 Butt stock brick, St Ives Cream Russet or similar
- 03 Brick bonding pattern: ZSerrin
- 04 Aluminium soffit bronze aluminium
- 05 Composite aluminium windows bronze anodised
- 06 Aluminium soffit panel, dark grey to match soffits
- 07 Steel welded balustrade, rounded with reveal, bronze colour
- 08 Bronze anodised aluminium mesh, 50mm and 100mm
- 09 Entrance door profile aluminium panel
- 10 Entrance door bronze anodised aluminium, often panel and stainless steel handle
- 11 Horizontal bronze anodised aluminium
- 12 Steel welded balustrade, bronze colour
- 13 Concealed metal door dark grey